



DMDI NEWS

dental & medical diagnostic imaging

A Centre of Excellence

**November 2011
Newsletter 25**

Orofacialmaxillary specialist Radiologist

This newsletter features Dr Charles Lott; MB BS (Adel), FRCS, FRCR, FRANZCR; Medical Director, Imaging Partners Online (IPO) and excerpts of a presentation, entitled Extra-Dental Findings on Cone Beam CT, he made to dental students and staff of the University of Melbourne's Dental School, in August 2011.



Dr Lott trained in Adelaide and in the United Kingdom. He is a Fellow of Royal College of Surgeons, Royal College of Radiologists and Royal Australian and New Zealand College of Radiologists. He holds specialist recognition in Australia and the UK.

He has worked in both public based, Repatriation Hospital Daw Park, SA, and private practice with Perrett Medical Imaging. He has a strong background in Rural Radiology with his radiology practice in the Northern Territory, country South Australia and central NSW. He was the founding Managing Partner of RadiologySA for 3 years prior to moving to the UK to work with IPO to report Australian overnight radiology. While there he became part of the UK team also and became the UK Clinical Director for IPO UK.

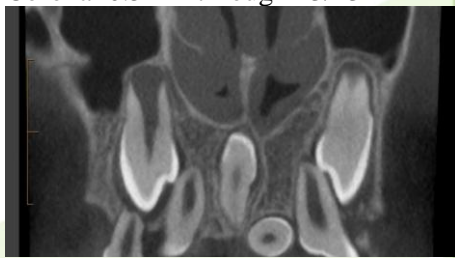
His clinical interests include musculoskeletal, interventional, orofaciomaxillary and cardiac imaging. He has been a past President of AMSIG and the Convenor of RANZCR Cardiovascular Imaging Group and the RANZCR Annual Scientific Conference 2008.

Dr Lott, and other IPO Radiologists trained and supervised by him, provide the radiology reports of DMDI imaging and scans. If you wish to seek clarification and/or ask questions about the reports you receive, please contact Pamela and she will follow-up with IPO, and seek a review. (It is a medico-legal requirement that any clarifications/questions about reports are made to DMDI/Pamela in the first instance)

Excerpts of Dr Lott's presentation to the University of Melbourne's Dental School -

“Image processing power is now awesome and has developed at a phenomenal rate since its inception!”

Accutomo 170 Cone Beam CT at DMDI
Coronal 0.5mm through 13/23



Supernumerary palatal tooth

Same Cone Beam CT as coronal 10mm thick
MIP



Supernumerary palatal tooth

t 03 9889 1771

f 03 9889 1772

e reception@dmdi.com.au

w www.dmdi.com.au

Unit 9 1175 Toorak Road Camberwell Victoria 3124

Mon to Fri 8.30am to 5pm, by appointment



If you require a referral pad you can write to us at referral@dmdi.com.au

or simply go to our web page at www.dmdi.com.au and download a form.

If you wish to speak with our radiographer, please call 03 9889 1771.

Location - Unit 9 1175 Toorak Road Camberwell Victoria 3124

CBCT Calcifications –

35% some calcification - 90% are of the neck.

Commonest soft tissue calcifications

- Carotid artery calcifications (CAC)
- Calcifications of the triticeous cartilage (CTC)
- Calcifications of the tonsils (CT)

Khan Z, Wells A, Scarfe W, Farman A. Cone Beam CT isolation of calcifications in the maxillofacial and cervical soft tissues: A retrospective analysis. Int J Computer Assist Radiol Surg 2008;3(Suppl 1):S221-S222

Incidental CBCT findings include –

<p>Calcifications:</p> <ul style="list-style-type: none"> • Carotid artery calcifications • Pineal gland calcifications • Vertebral artery calcification • Tonsilliths • Sialoliths • Calcifications in adenoids • Calcifications in epiglottis • Calcifications in temporal regions • Osteoma cutis 	<p>Cervical vertebrae:</p> <ul style="list-style-type: none"> • Osteoarthritis • Osseous screws in vertebrae • Fusion of C2-3 Cervical vertebrae • Nonsegmentation of C2-3 vertebrae
<p>Paranasal sinuses</p> <ul style="list-style-type: none"> • Mucositis/Sinusitis/Mucous retention pseudocysts • Hypoplastic sinuses • Surgical changes in the sinuses • Osteoma <p>*Incidental maxillary sinus findings in orthodontic patients: a radiographic analysis using cone-beam computed tomography (CBCT)</p> <ul style="list-style-type: none"> - Incidental maxillary sinus findings 47% - Flat mucosal thickening 24% - Polypoid mucosal thickening 19% - Signs of acute sinusitis 4% <p>*Pazera P, Bornstein MM, Pazera A, Sendi P, Katsaros C: Incidental maxillary sinus findings in orthodontic patients: a radiographic analysis using cone-beam computed tomography (CBCT) Orthod Craniofac Res 2011;14:17-24</p>	<p>Other findings</p> <ul style="list-style-type: none"> • Unhealed fracture • Osteopenia • Surgical drain in the soft tissue of brain • Surgical staples in the neck • Retained suture material • Adenoidal hyperplasia • Soft tissue swellings in the airway region • Palatal tori • Mandibular hemihyperplasia • Cleft Palate • Stafne defect • Nut Notch • Implant impinging on borders of the inferior alveolar canal • Shot gun wound • Hair artifacts • Hearing aids • Nose ring • Earring

More details of the presentation are available from Pamela.

Professional Development sessions will recommence in 2012, and an agenda will be available in the first Newsletter of 2012. Some of the proposed speakers include Susan Hutchinson (“How to” session on the One Volume Viewer, version 2.0), Dr Andrei Locke, Dr David Figdor, Dr Jamie Lucas, Nobel Biocare, and more!

With the exception of February 2012, keep the first Wednesday of the month free to attend the PD sessions of your choice. It is planned to hold the first 2012 PD session on Wednesday 15 February.

Please note – DMDI will be closed from 12.30pm Friday 23 December 2011 and re-open at 8.30am on Monday 09 January 2012. We wish everyone a safe and happy festive season; a magnificent and prosperous New Year for 2012!!