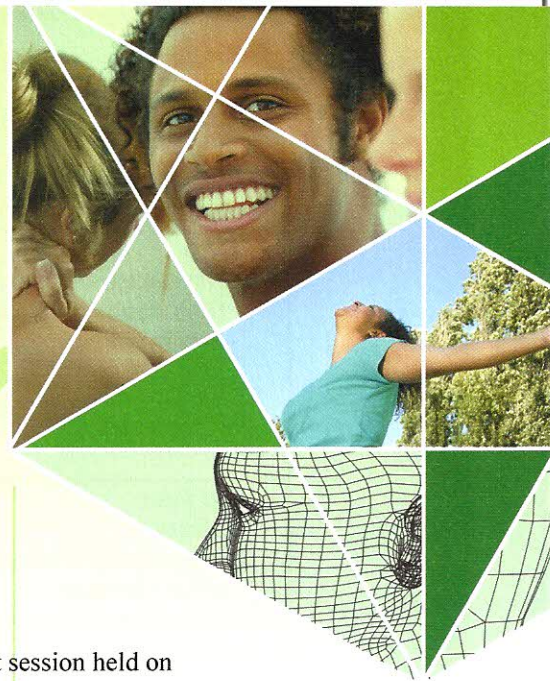




DMDI NEWS

dental & medical diagnostic imaging

A Centre of Excellence



AUGUST 2011
Newsletter 22

Endodontic diagnosis & treatment in 3D

Presented by **Dr David Figdor**, at DMDI's Professional Development session held on 03 August 2011.

This talk covered 3 main areas:

1. Benefits,
2. Applications, and
3. Limitations of CBCT imaging in Endodontics

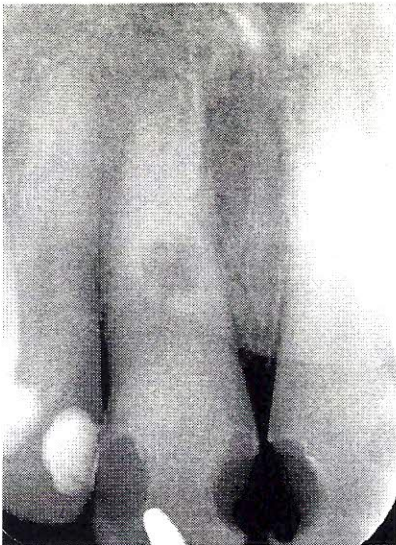
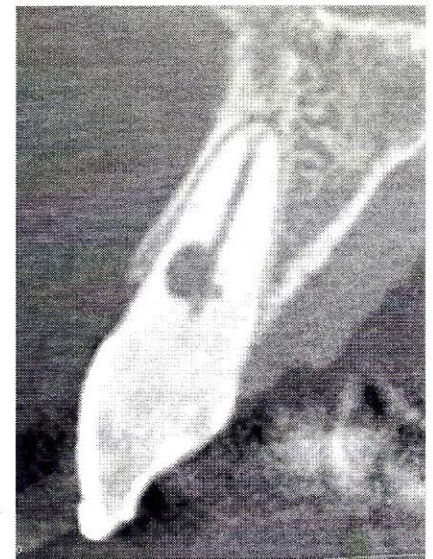


Fig 1. Conventional radiograph shows tooth 11 with mid-root radiolucent lesion.

Fig 2. Sagittal slice from CBCT scan



The above images illustrate the value of 3D imaging, with the intra-oral radiograph showing yet not telling the full story. Based on the radiograph it is a resorption lesion but it is uncertain as to the origin of ie. internal or external. Being 2D you also cannot tell if the lesion is on the palatal or labial side or if it breaches the root wall. As you can see in Fig. 2 the resorption is internal, located towards the labial aspect and does not perforate the root wall. Such information significantly aids diagnosis and treatment planning of the case.

t 03 9889 1771
f 03 9889 1772
e reception@dmdi.com.au

w www.dmdi.com.au

Unit 9 1175 Toorak Road Camberwell Victoria 3124

Mon to Fri 8.30am to 5pm, by appointment



If you require a referral pad you can write to us at referral@dmdi.com.au

or simply go to our web page at www.dmdi.com.au and download a form.

If you wish to speak with our radiographer, please call 03 9889 1771.

Location - Unit 9 1175 Toorak Road Camberwell Victoria 3124

The following points were discussed within each area.

<p>Benefits</p> <ul style="list-style-type: none"> Distinguish structures in 3D High resolution, small field of view Less radiation 	<p>Applications</p> <ul style="list-style-type: none"> • Periapical pathology • Root and canal anatomy • Non-endodontic pathology • Iatrogenic defects • Root fractures • Root resorption • Treatment planning
<p>Limitations</p> <ul style="list-style-type: none"> • Artefacts • 2D sections of 3D images • Machine variations • Responsibility for reading • Resolution 	

Next Professional Development session at DMDI –

“Tooth vs Implant: Current evidence and case discussion”

Presented by Dr William Zhang (Specialist Periodontist)

When – Wednesday 07 September 2011, commencing 6.30pm

Where – Unit 9, 1175 Toorak Road Camberwell 3124

Please rsvp to reception@dmdi.com.au or telephone Pamela on 9889 1771; and also advise if you require parking (under the building). Light refreshments served from 6.30pm.

Plenty of parking is also available on SummerHill Road ,opposite Leo’s SuperMarket which is a 2 min walk to DMDI.

Morita has released a new software program and this is to be uploaded at DMDI on 22 and 23 August. To name just a few features, this improved software will provide the ability for implant simulation (create and position of implants); perform nerve canal tracings; and improve the functioning of the OVV program when viewing CBCT scans.

Although preferable to make an appointment for a CBCT scan; patients are able to walk-in for OPG and Lateral Ceph imaging. Most requirements are able to be accommodated – call Pamela to discuss. It would be appreciated if you and/or your patient call ahead to alert us.

If you do not have a DMDI referral, please call Pamela on 9889 1771 and we can send them to you or download from our website at www.dmdi.com.au

Note -

- All dentists (specialist or not) are able to refer for a CBCT scans, and the patient receives the same Medicare rebate irrespective of the referrers status;
- Please remember to provide clinical notes (signs/symptoms if relevant) on the referral form so as to assist Susan in the imaging/scanning process; and the Radiologist in their reporting;
- Further PD sessions are to be held later this year, watch the Newsletter for details!