



DMDI NEWS

dental & medical diagnostic imaging

A Centre of Excellence



Newsletter 13

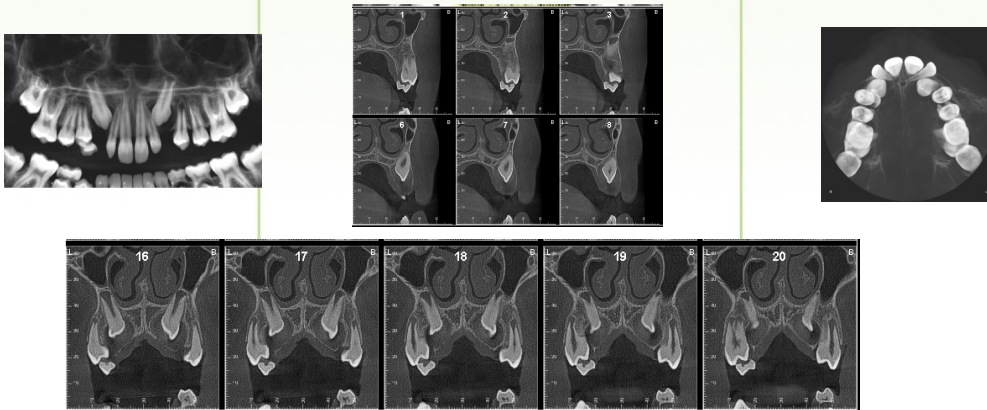
November 2010

Paediatrics and Special Needs Patients

Creating a warm and stress free environment for health care is a vital part of any practice. It's especially important when working with children and those with special needs.

At DMDI, we value the time diagnostic imaging examinations can take, and pride ourselves on creating a comfortable and relaxed environment for such imaging.

We provide excellent OPG/LAT & PA CEPH imaging using the Morita Veraviewepocs 3De unit. Our OPG imaging times are lower than that in standard practices (ours is 7 sec) which may assist in imaging the young.



Our **Morita Accuitomo 170 (A170) CBCT** scanner is capable of **low dose** and **hi speed** imaging to cater for immobilization issues. We can provide as low as 5 sec scanning time for young patients or those who have difficulties remaining still.

The scanning field sizes are small enough to reduce the amount of scattered radiation and we provide lead aprons and thyroid protectors (where applicable).

In Orthodontic, pathologic, and traumatic situations we can provide an host of images in the Axial, Coronal and Sagittal planes. On top of which we have software generated "radiographic" images. All this from one dose to the patient.

We also store all raw data, as required by law, for at least 7 years. So if there is a need for copies of imaging we can provide it.

t 03 9889 1771
f 03 9889 1772
e reception@dmdi.com.au
w www.dmdi.com.au
Unit 9 1175 Toorak Road Camberwell Victoria 3124
Mon to Fri 8.30am to 5pm, by appointment



If you require a referral pad you can write to us at referral@dmdi.com.au or simply go to our web page at www.dmdi.com.au and download a form. If you wish to speak with our radiographer, please call 03 9889 1771.
Location - Unit 9 1175 Toorak Road Camberwell Victoria 3124

DMDI is proud to announce that it is now compliant with the requirements for the hearing impaired.

With both a desk top loop installed and the use of a mobile hearing loop we can ensure that those with hearing impairment fully understand the procedures, prior to the removal of their hearing aid, for imaging.

Patients need to T switch once entering the practice.

DMDI also has ramp access, wide doors, and a purpose built interior design to cater for patients in large wheel chairs.



The A170 CBCT from Morita is the premier Cone Beam CT available in the world today. It is the only one of its kind in Australasia. As a seated, and relatively open device, patients find the experience to be non stressful and fast.

This low dose, high quality Cone Beam CT offers the referrer superior quality imaging with a procedure that takes on average 17 seconds. Our software work-up that is sent to the referrer is without question, the very best available— so states our referral base.

If you are looking for a quality, low dose diagnostic imaging centre of excellence, DMDI is the only centre that understands and specialises in Dental Diagnostics.

Please contact Pamela or Susan at DMDI to discuss the imaging needs of your patients - **9889 1771**



The **DMDI Professional Development series**, planned for 2011, is taking shape. Dr Les Janovic will be facilitating a session on 04 May 2011, discussing the use of OPG and Lateral Cephalometric imaging in the diagnosis and treatment of sleep apnoea.

Other speakers, on Endodontics, Periodontics and Orthodontics, are yet to be confirmed and a complete list is expected to be published in the December Newsletter. Watch this space!

The **90 minute free consultation** offer with Deb Wilson, PPS, about your business growth and as elaborated in the October 2010 Newsletter, is now **extended until 17 December 2010!**

Call Deb on 0421 782 966.

