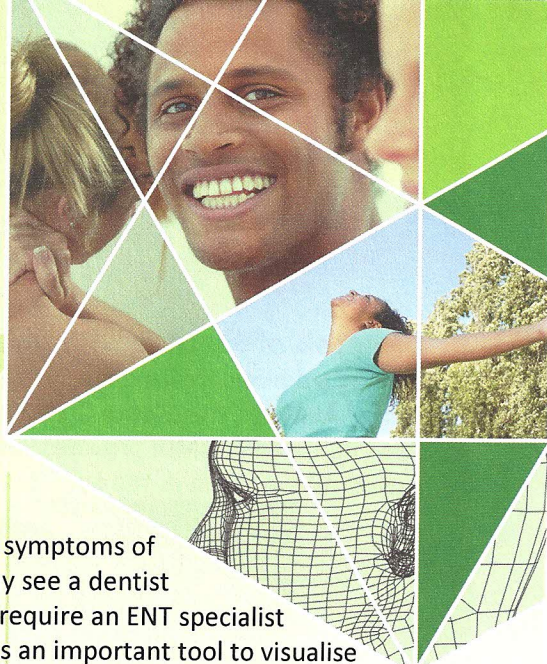




DMDI NEWS

dental & medical diagnostic imaging

A Centre of Excellence



Newsletter 6 April 2010

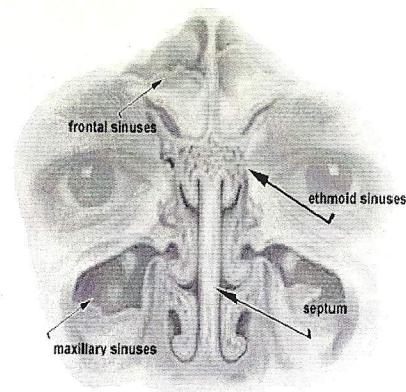
Sinusitis

Sinusitis is an infection that is becoming more prevalent in our society¹. As the symptoms of sinusitis can vary, it can be difficult to make an accurate diagnosis. Patients may see a dentist complaining of dental pain, but on further examination this referred pain may require an ENT specialist to treat ongoing sinusitis. Cone Beam Computer Tomography (CBCT) imaging is an important tool to visualise the sinuses and the affected mucosa lining. The Morita Accuitomo 170 Cone Beam CT at DMDI provides state of the art, high resolution imaging of the sinuses. This system can provide slices as thin as 0.125mm, allowing for the highest quality visualisation of anatomy and irregularities. This can be an important tool for planning of sinus surgery and the correction of structural problems.

Causes of Sinusitis

The sinuses are air-filled spaces within the face and head, which make up part of the respiratory system. The lining of the nasal cavities and sinuses produces mucous which helps maintain efficient airway function². Sinusitis is an infection or inflammation of the nasal sinuses. This blocks this outflow of mucous which can lead to sinus pressure, pain and infection.³

Sinusitis may be an acute problem caused by bacterial infection. It is often a secondary complication of a viral infection or as a result of an untreated allergy.⁴ Sinusitis, however, may also be a chronic condition caused by an inflammatory disorder. It can last for years if not treated adequately and can be exacerbated by allergies and immunological or structural problems within the nose.⁴



www.drpara.com.au/images/sinus_diagram

Symptoms of Sinusitis

The most common symptom of sinus infection is pressure in the facial region or behind the eyes. This is usually associated with a nasal obstruction, yellow/green nasal discharge and post nasal drainage.³ Headaches and facial pain are other common symptoms. This is due to the main sensory nerve to the sinuses, nose and face (the trigeminal nerve) also connecting to the nerves of the head and upper neck.⁵

Other symptoms include:

- Dental pain and aches
- Lost of smell
- Tiredness
- Snoring and Coughing

Incidence of Sinusitis on the Rise

Sinusitis affects people of all ages and its becoming more prevalent. Between 1989 and 1995, the statistics for sinusitis in Australia rose from 4 per cent to 10 per cent. By 2000 sinusitis was prevailing in 16% of the population.⁶ With the incidence of allergies, asthma and infections on the rise, incidents of sinusitis is likely to rise further.⁷

t 03 9889 1771
f 03 9889 1772
e reception@dmdi.com.au
w www.dmdi.com.au
Unit 9 1175 Toorak Road Camberwell Victoria 3124
Mon to Fri 8.30am to 5pm, by appointment



If you require a referral pad you can write to us at referral@dmdi.com.au or simply go to our web page at www.dmdi.com.au and download a form. If you wish to speak with our radiographer, please call 03 9889 1771.
Location - Unit 9 1175 Toorak Road Camberwell Victoria 3124

